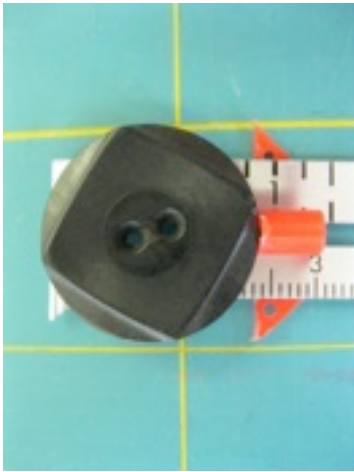


Clothing and TEXTILES

UTAH STATE UNIVERSITY COOPERATIVE EXTENSION PROGRAMMING

Sewing Technique: Hand-Worked Keyhole Buttonhole

Keyhole buttonholes are used to provide extra strength, especially if you are using a button with a shank. Cotton covered polyester thread is ideal, the packaging should indicate button usage.



1. Determine how large to make your buttonhole by adding the width and height of the button plus 1/8". We add the 1/8" so that the hole is large enough without being too snug.



2. Mark the placement for your buttonhole opening on the exterior of the garment in accordance with your pattern.



3. Once you have a marking to indicate buttonhole placement use a marking pencil to draw a stitch depth guideline approximately 1/8" around the perimeter of the buttonhole marking. The perimeter will be squared on one end and rounded on the other. The rounded end is closest to the finished edge of the garment, creating the shape of a keyhole.



UtahStateUniversity
COOPERATIVE EXTENSION

Utah State is an affirmative action / equal opportunity institution.

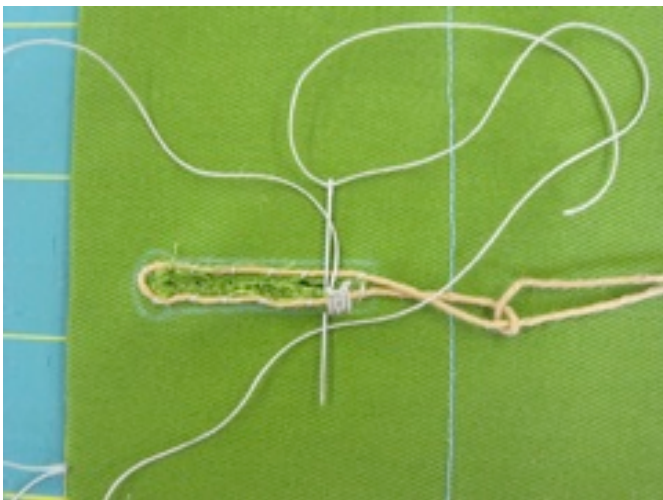


CLOTHING
CONSTRUCTION



4. With a small pair of sharp scissors, cut along the line that marks the buttonhole opening. Add two diagonal snips in the rounded part of the buttonhole, this will help to create the keyhole shape.

5. For a more finished look, you can choose to cord the buttonhole with heavy-duty thread, buttonhole twist, or fine string. Cut a length of cord and knot it so that it fits loosely around the buttonhole. Place the cord around the buttonhole so that the knotted end is at the squared side of the buttonhole. Whipstitch around the edges of the buttonhole to tack the cording in place.



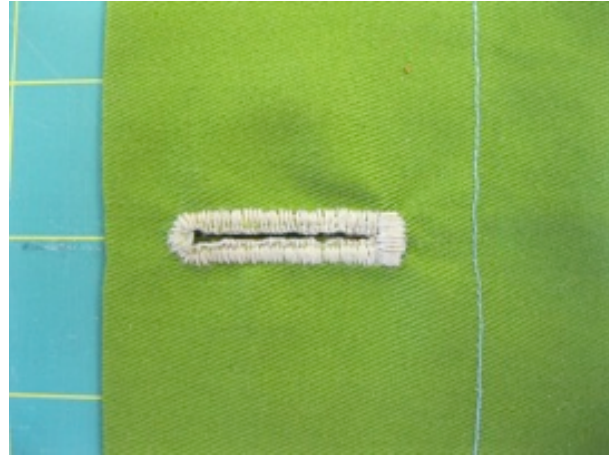
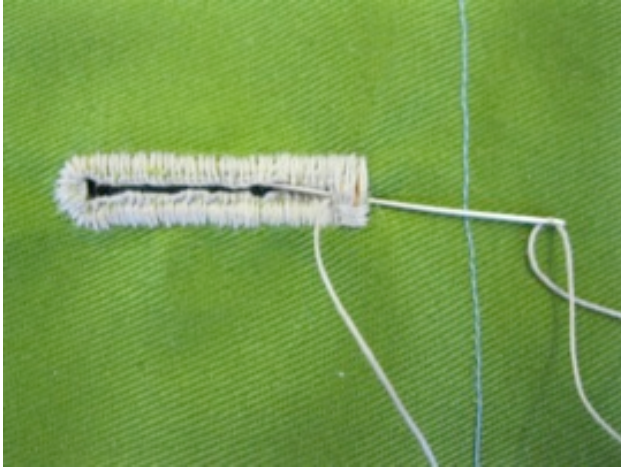
6. For a finished look cover with a buttonhole stitch. To create a buttonhole stitch, start on the bottom edge, working from right to left from the squared end. Pierce fabric from behind close to the raw edge, and tie a knot at the raw edge to secure the thread. Loop thread up to the left and then down to the right forming a C shape. Insert needle through the buttonhole and up from the underside, keeping the C shape under both the point and the eye of the needle. Use your stitch depth markings as a guide to determine how long your stitches should be. Pull needle up through the fabric and away from you so that the knot lies on the inner edge of the buttonhole. Place stitches close together so that the knots lining the raw inner edges.



7. Continue the buttonhole stitch around the entire opening, fanning the stitches as you come to the keyhole.

8. When you are back to the squared end, sew several long stitches across the entire length of the squared end, working in the same direction as the previous buttonhole stitches. Trim and tuck cording, hiding the knot under the stitches. Next cover the long stitches with a set of perpendicular buttonhole stitches.

9. Trim and tuck all threads.



Industry Standards for a Well-Constructed Buttonhole

- Buttonholes are an equal distance apart
- Buttonhole is the correct length and width for button to fit through
- Buttonhole is neat in appearance on right and wrong side of the fabric
- Buttonhole is flat and attractive
- Buttonhole is positioned so button is secured when garment is being worn
- Buttonhole is evenly slashed and excess threads are trimmed

Sources:

Readers Digest Editor. (2002). *New Complete Guide to Sewing*. China: Readers Digest. Creative Publishing. (2009). *Complete Photo Guide to Sewing*. Minneapolis: Creative Publishing International, Inc. Cole, Julie, & Czachor, Sharon. (2009). *Professional sewing techniques for designers*. New York, Fairchild Publications, Inc.

Written by:

Sarah Geer, USU Extension Intern
Jen Giddens, USU Extension Intern

Chanae Weller, USU Extension Intern
Lindsey Shirley, PhD, Clothing and Textiles Specialist

Utah State University is committed to providing an environment free from harassment and other forms of illegal discrimination based on race, color, religion, sex, national origin, age (40 and older), disability, and veteran's status. USU's policy also prohibits discrimination on the basis of sexual orientation in employment and academic related practices and decisions.

Utah State University employees and students cannot, because of race, color, religion, sex, national origin, age, disability, or veteran's status, refuse to hire; discharge; promote; demote; terminate; discriminate in compensation; or discriminate regarding terms, privileges, or conditions of employment, against any person otherwise qualified. Employees and students also cannot discriminate in the classroom, residence halls, or in on/off campus, USU-sponsored events and activities.

This publication is issued in furtherance of Cooperative Extension work, acts of May 8 and June 30, 1914, in cooperation with the U.S. Department of Agriculture, Noelle E. Cockett, Vice President for Extension and Agriculture, Utah State University. (Clothing&Textiles/2011-04pr)